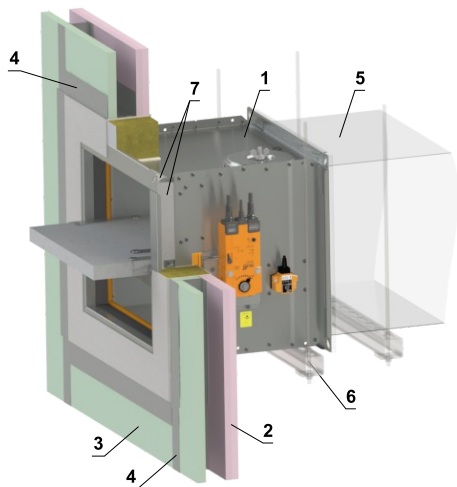


FDMB (Shaftwall) - EI 60 S/EI 90 S - UKCA



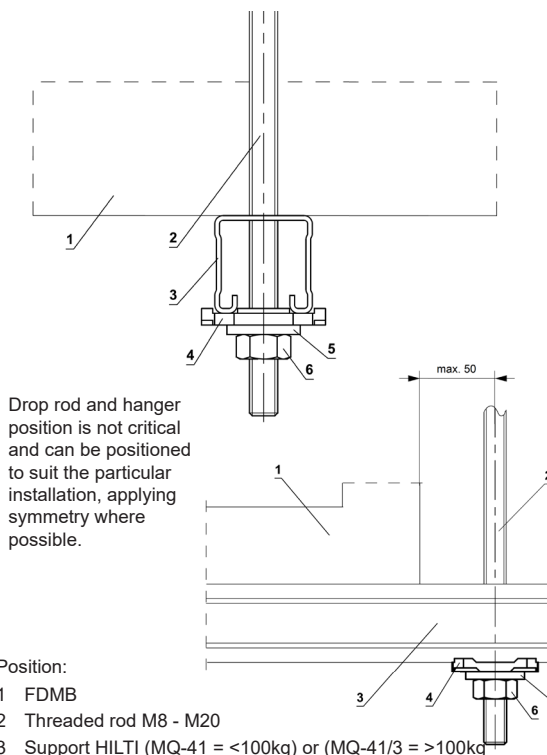
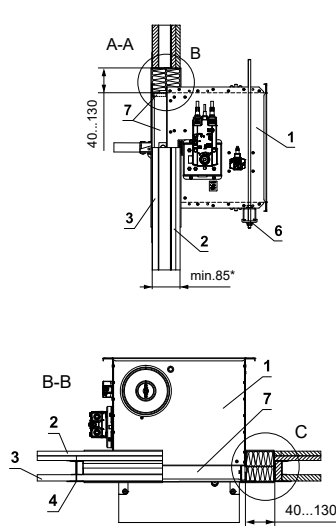
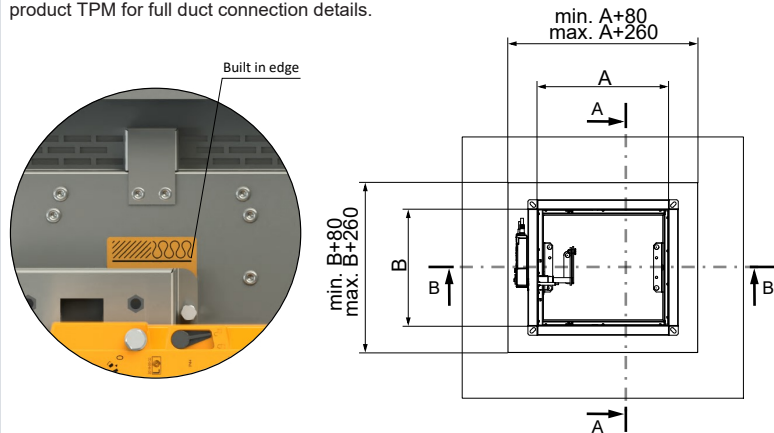
- 1 FDMB
- 2 Plasterboard BS EN 520 - Type F min. 2x12,5 mm*
- 3 Plasterboard BS EN 520 - Type F min. 1x19 mm*
- 4 Plasterboard profile
- 5 Duct
- 6 Fixing profile with threaded rod → see pages 32 to 33
- 7 Protective cladding board - min. th. 10 mm, min. density 870 kg/m³ (e.g. PROMATECT-H) → see page 43 Ablative Coated Batt HILTI
- 8 Firestop Board - min. density 140 kg/m³ (HILTI CFS-CT B 1S 140/50...)
- 9 Fire stop coating - th. 1 mm (HILTI CFS-CT...) - coating is overcoated on the support construction and on the damper casing/duct
- 10 Firestop acrylic sealant - (HILTI CFS-S ACR...) fill the gap from both sides of the fire separation construction and around the perimeter of penetration and damper casing

* For fire resistance of the shaftwall EIS 60

Damper must be installed to the built in edge shown by orange label on the damper.

Blade overlaps must be accounted for to ensure blade operation is not compromised.
For full blade overlap dimensions please see product TPM

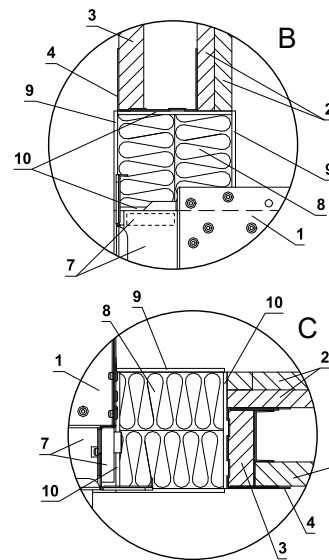
FFDM breakaway joint should be used either side of the damper. See product TPM for full duct connection details.



Drop rod and hanger position is not critical and can be positioned to suit the particular installation, applying symmetry where possible.

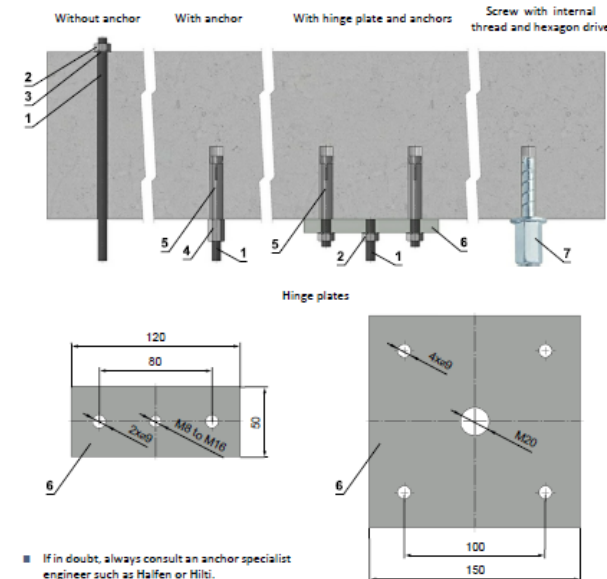
Position:

- 1 FDMB
- 2 Threaded rod M8 - M20
- 3 Support HILTI (MQ-41 = <100kg) or (MQ-41/3 = >100kg)
- 4 Bored plate HILTI MQZ-L
- 5 Washer for M8 - M20
- 6 Nut M8 - M20



Advice provided by a fixing specialist contractor takes precedence.

Examples of anchoring to the ceiling construction
Follow the instructions of fixing specialist or installation company



- 1 Threaded rod M8 - M20
- 2 Nut M8 - M20
- 3 Washer for M8 - M20
- 4 Coupling Nut M8 - M20
- 5 Anchor
- 6 Hinge plate - min. thickness 10 mm
- 7 Concrete screw tested for fire resistance R30-R90, max. tension up to 0.75kN (length 35mm)

Load capacities of threaded rods at the required fire resistance 60 min. < t ≤ 120 min.

Size	As [mm ²]	Weight [kg]	
		for 1 rod	for 2 rods
M8	36,6	22	44
M10	58	35	70
M12	84,3	52	104
M16	157	96	192
M18	192	117	234
M20	245	150	300

Drop rod diameter is based on damper weight, see full Damper TPM for further technical details or contact help@Mandik.co.uk. Mandik reserves the right to update this information without prior notice.

MANDIK®

Mandik UK Ltd 2440 The Quadrant
Aztec West Bristol BS32 4AQ
www.mandik.co.uk
Office: 0117 4526376

Title: **FDMB- Shaftwall - Firebatt - UKCA**

UKCA certified acc. to EN 15650

Classification: **EI 60 (ve i<->o) S with EI 60 wall
EI 90 (ve i<->o) S with EI 90 wall**

Tested in accordance with EN 1366-2

Drawing No: **0000-0000-140 Rev 3**

Size: (min-max) **100x100 - 1000x500**

Date: **27/06/2024**

Illustrated: **AA**

Approved: **MF**

Intellectual property of MANDIK Ltd. Unauthorised use shall be punishable by law