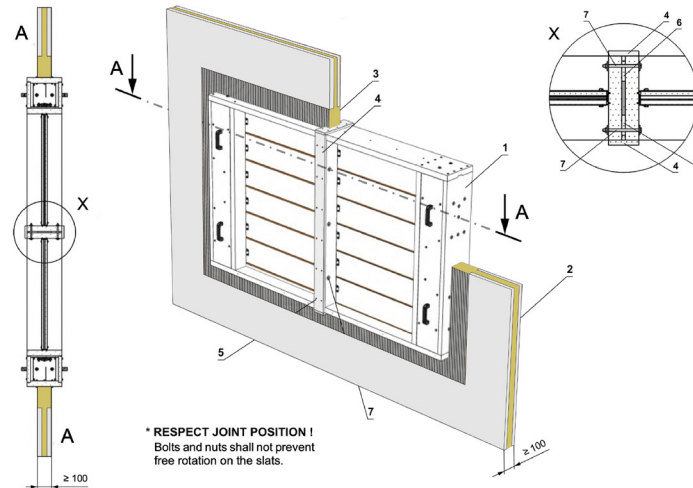


## SEDM-L Battery EI 120 S (Lightweight Wall - Fire Batt Fire stop)



Position:

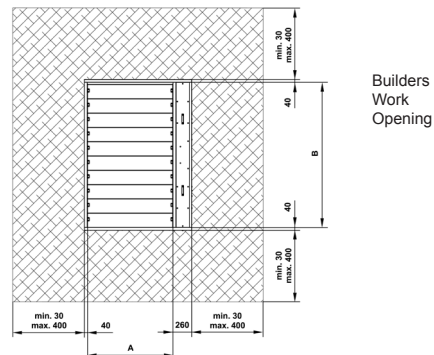
- 1 SEDM-L
- 2 Gypsum wall construction
- 3 Ablative Coated Batt (e.g. Firestop Board HILTI CFS-CT B 1S 140/50 - min density 140kg/m<sup>3</sup> + Firestop acrylic sealant HILTI CFS-S ACR or equivalent)
- 4 Fire stop coating thickness 1mm (e.g. HILTI CFS-CT, PROMASTOP-CC or equivalent)
- 5 Overplating strip (e.g. Supalux-S, th. 12mm, width 40 to 50mm)
- 6 Screw UNI 4x40mm (span 200 to 250mm)
- 7 Spacing strip (e.g. Supalux-S, th. 12mm, width 40 to 50mm)
- 8 M8 bolt assembly (bolt M8x105mm, 2 pcs large washer M8, nut M8)

Wall build construction must be symmetrical and in accordance with BS EN 1363-1 and tested in accordance with BS EN 1364-1.

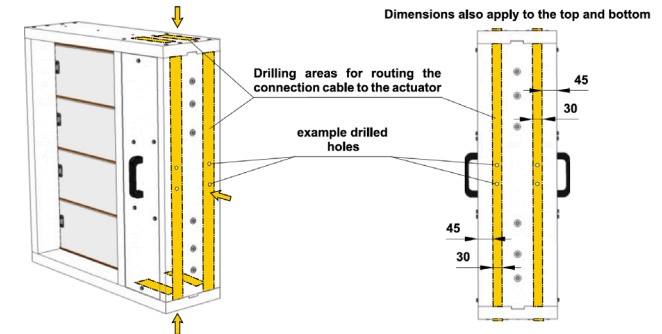
Detail of plasterboard construction according to Rigips instructions (substitutes can be used that have a minimum of 2 x 15mm gypsum boards per side, such as British Gypsum, Knauf or Lafarge products that are the same overall wall thickness & EI performance).

Each damper must be suitably supported in each corner front and rear with temporary block-work, temporary steel supports or similar, until fire batt has fully hardened.

Damper must be located with the damper blade central in wall thickness.



Cable exit detail:



Procedure:

- Use drill (drill size acc. To suit connecting cable  $\varnothing + 2$  mm for seal up by mastic) and make two holes. It is possible to drill holes in any side of the housing.
- Pull the heat resistant cable through the calcium silicate plate (wall and connect with cables from actuator acc. to above mentioned electrical diagram.
- Seal up the space around cable with fire resistant mastic (HILTI CFS-S ACR, PROMASTOP) or equivalent.
- Let the mastic harden.

After installing the damper and the fire batt has hardened, supports of the damper, transport struts and corners can be removed.

See full Damper TPM for further technical details or contact [help@Mandik.co.uk](mailto:help@Mandik.co.uk).

Mandik reserves the right to update this information without prior notice.



# MANDIK®

Mandik UK Ltd  
www.mandik.co.uk  
Office: 0117 4526376  
Redwood House  
Brotherswood Court  
Great Park Road  
Almondsbury  
Bristol BS32 4QW

Title: SEDM-L Battery - Lightweight wall/ Fire Batt

CE certified acc. to EN 15650

Classification: EI 120 (vedw i<->o)  
S1000CmodHOT 400/30MAMulti

Size: (min-max) 150x150 - 1500x800

Drawing No: 0000-0000-0054 REV3

Date: 24/11/2021

Illustrated: GP Approved: MF

Intellectual property of MANDIK Ltd. Unauthorised use shall be punishable by law