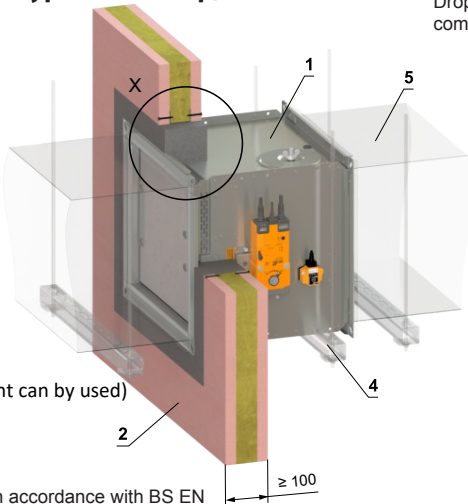
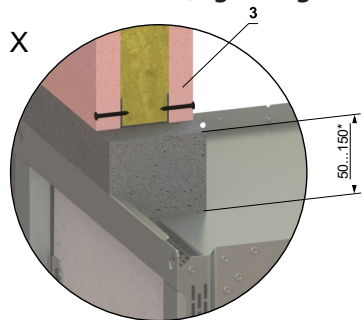


FDMB EI 120 S (Lightweight wall - Gypsum fire stop)



- 1 FDMB
- 2 Gypsum wall construction
- 3 British gypsum thistle bond 60 (or equivalent can be used) minimum density 670 kg/m³
- 4 Fixing profile with threaded rod
- 5 Duct

Wall build construction must be symmetrical and in accordance with BS EN 1363-1 and tested in accordance with BS EN 1364-1.

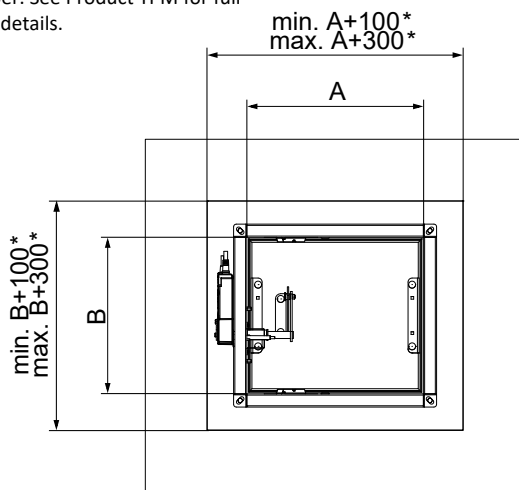
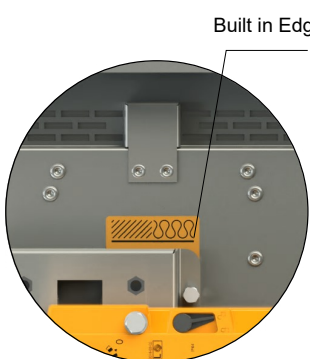
FDMB can be installed with blade axis positioned either vertically or horizontally and with the actuator positioned at 0°, 90° or 270°, but not at 180°

Blade overlaps must be accounted for to ensure blade operation is not compromised. For full blade overlap dimensions please see product TPM.

Damper must be installed to built in edge shown by orange label on the damper

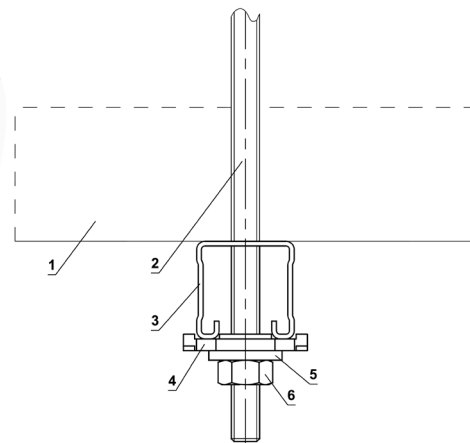


FFDM Breakaway Joint should be used either side of the damper. See Product TPM for full duct connection details.

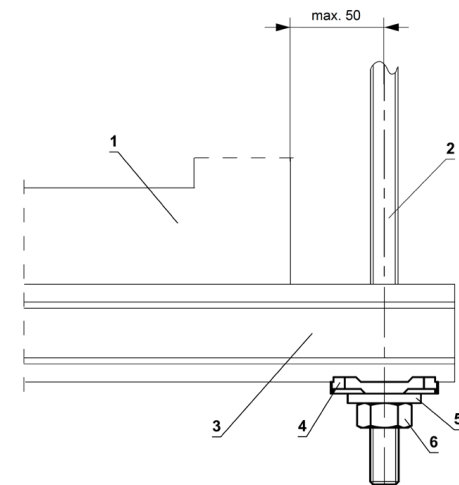


*In the case of fire resistance EI 120, the installation gap is limited to 50 mm +10/-0. For fire resistance EI 90 or lower, an installation gap range of 50–150 mm is permitted.

Drop rod and hanger location, please ensure that actuator operation is not compromised and ensure sufficient space to allow access hatch removal.



Drop rod and hanger position is not critical and can be positioned to suit the particular installation, applying symmetry where possible.

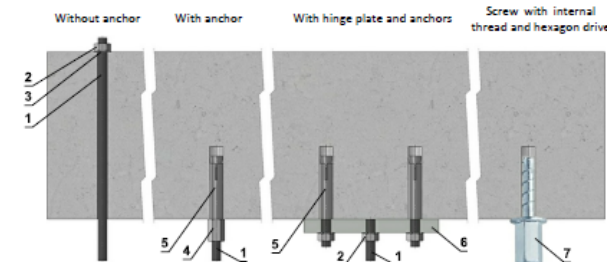


Position:

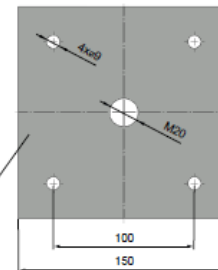
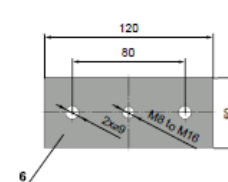
- 1 FDMB
- 2 Threaded rod M8 - M20
- 3 Support HILTI (MQ-41 = <100kg) or (MQ-41/3 = >100kg)
- 4 Bored plate HILTI MQZ-L
- 5 Washer for M8 - M20
- 6 Nut M8 - M20

Advice provided by a fixing specialist contractor takes precedence.

Examples of anchoring to the ceiling construction
Follow the instructions of fixing specialist or installation company



Hinge plates



■ If in doubt, always consult an anchor specialist engineer such as Halfen or Hilti.

- 1 Threaded rod M8 - M20
- 2 Nut M8 - M20
- 3 Washer for M8 - M20
- 4 Coupling Nut M8 - M20
- 5 Anchor
- 6 Hinge plate - min. thickness 10 mm
- 7 Concrete screw tested for fire resistance R30-R90, max. tension up to 0.75kN (length 35mm)

Load capacities of threaded rods at the required fire resistance 60 min. < t ≤ 120 min.

Size	As [mm ²]	Weight [kg]	
		for 1 rod	for 2 rods
M8	36,6	22	44
M10	58	35	70
M12	84,3	52	104
M16	157	96	192
M18	192	117	234
M20	245	150	300

Drop rod diameter is based on damper weight, see full Damper TPM for further technical details or contact help@Mandik.co.uk. Mandik reserves the right to update this information without prior notice.

MANDIK®

Mandik UK Ltd
www.mandik.co.uk
Office: 0117 4526376

2440 The Quadrant
Aztec West
Bristol
BS32 4AQ

Title: **FDMB - Lightweight Wall - Mortar/Gypsum**

UKCA certified acc. to EN 15650

Classification:

Tested in accordance with EN 1366-2

EI 120 (ve i<->o) S

Size: (min-max) 100x100- 1000x500 up to 0.5m2

Drawing No:

Date: **06/06/2025**

0000-0000-120 Rev 5

Illustrated: **AA** Approved: **MF**

Intellectual property of MANDIK Ltd. Unauthorised use shall be punishable by law